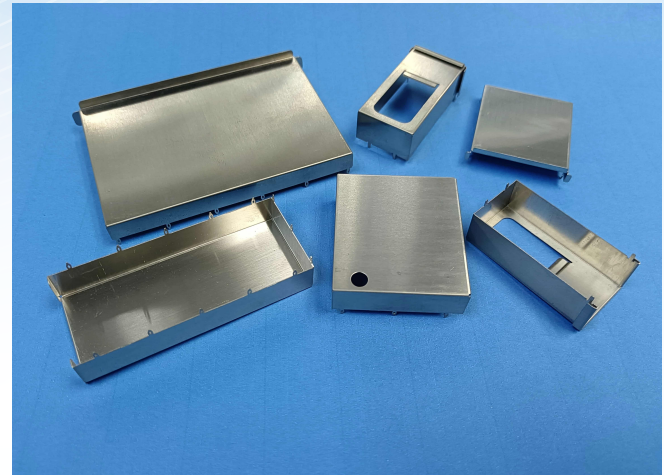


Schlegel Electronic Materials (SEM) is offering on-board EMI containment solutions which are easy to incorporate into existing production processes. Cost effective for midsize and high volume business, **Schlegel Electronic Materials** offers Single (SD) and Double (DD) Surface Mount Shielded Cans. Double Surface Mount consist of a fence (pick and place) and a cover to preserve the access to on-board components. High solderability and a large choice of standard sizes conforming with most circuit dimensions make **SEM** Shielded Cans an easy path to prevent cross talk and to ensure limited emissions. Our Shielded Cans are available in Tape and Reel packaging per EIA 481 standard.



Schlegel Electronic Materials also designs and manufactures circuit board shielding to customers' specifications. For further information, please contact your SEM representative.

SEM also propose metal parts for other type of applications.



Spring and Contact Plate

- For buffering accessories and for electrical conduction



Metal Boxes

- For product protection



Wire Mesh

- For heat ventilation applications where high corrosion resistance is an important factor



SINGLE SURFACE MOUNT

P/N	External			Thickness	TAPE & REEL		
	Width	Length	Height		according to EIA 481		
	Width	Length	Height		Width	Pitch	Parts/Reel
SEM 101	12.7 (0.500")	13.7 (0.538")	2.54 (0.100")	0.2 (7.8 mils)	24 (0.950")	20 (0.787")	1000
SEM 102	16.5 (0.650")	16.5 (0.650")	3.60 (0.142")	0.2 (7.8 mils)	32 (1.260")	24 (0.950")	700
SEM 103	26.21 (1.032")	26.21(1.032")	5.00 (0.200")	0.2 (7.8 mils)	44 (1.730")	32 (1.260")	300
SEM 104	32.00 (1.260")	32.00 (1.260")	6.00 (0.236")	0.2 (7.8 mils)	44 (1.730")	36 (1.420")	225
SEM 105	25.40 (1.000")	38.10 (1.500")	6.00 (0.236")	0.2 (7.8 mils)	56 (2.200")	32 (1.260")	250
SEM 106	33.68 (1.326")	36.83 (1.450")	5.00 (0.200")	0.2 (7.8 mils)	56 (2.200")	40 (1.575")	300
SEM 107	44.37 (1.747")	44.37 (1.747")	9.75 (0.384")	0.2 (7.8 mils)	56 (2.200")	56 (2.200")	120



DOUBLE SURFACE MOUNT (Fence and Cover)

P/N	External (Fence)			Thickness	TAPE & REEL (Fence only)		
	Width	Length	Height		according to EIA 481		
	Width	Length	Height		Width	Pitch	Parts/Reel
SEM 201	12.7 (0.500")	13.7 (0.538")	2.54 (0.100")	0.2 (7.8 mils)	24 (0.950")	20 (0.787")	1000
SEM 202	16.5 (0.650")	16.5 (0.650")	3.60 (0.142")	0.2 (7.8 mils)	32 (1.260")	24 (0.950")	700
SEM 203	26.21 (1.032")	26.21(1.032")	5.00 (0.200")	0.2 (7.8 mils)	44 (1.730")	32 (1.260")	300
SEM 204	32.00 (1.260")	32.00 (1.260")	6.00 (0.236")	0.2 (7.8 mils)	44 (1.730")	36 (1.420")	225
SEM 205	25.40 (1.000")	38.10 (1.500")	6.00 (0.236")	0.2 (7.8 mils)	56 (2.200")	32 (1.260")	250
SEM 206	33.68 (1.326")	36.83 (1.450")	5.00 (0.200")	0.2 (7.8 mils)	56 (2.200")	40 (1.575")	300
SEM 207	44.37 (1.747")	44.37 (1.747")	9.75 (0.384")	0.2 (7.8 mils)	56 (2.200")	56 (2.200")	120

Standard material : pre-tin plated steel - All dimensions in mm (inches)

The data provided is for reference only. Product characteristics vary depending on environment or measurement conditions. Schlegel Electronic Materials, SEM, reserves the right to make change to the data at any time without notice.

www.schlegelemi.com

Copyright © 2014-2023. Schlegel Electronic Materials. All rights reserved. 10/2023