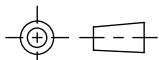
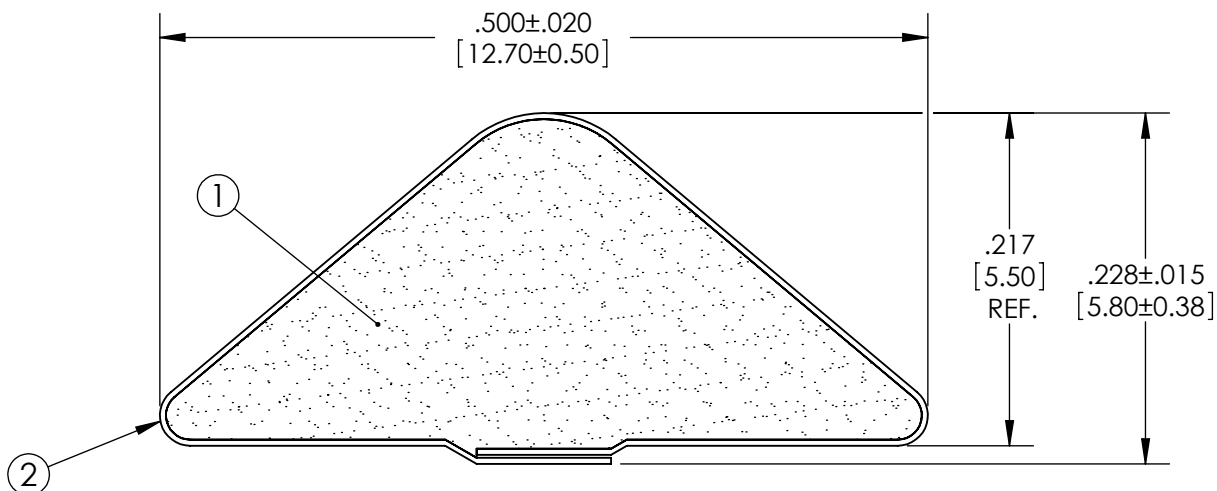
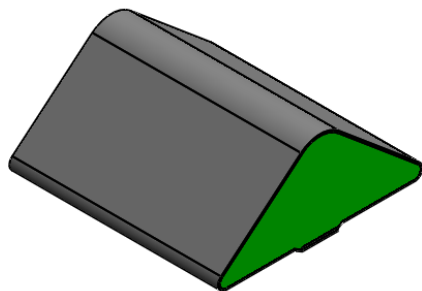


## ROCHESTER DIVISION PRODUCT PRINT

The information disclosed in this drawing is confidential and the property of Schlegel Electronic Materials, INC. The use, disclosure, or reproduction of this information and related know-how is prohibited without written permission from Schlegel Electronic Materials, INC.

### Revisions

Level		Date	By
(A)	REV TO SOLIDWORKS	9/2/09	BEP
(B)	CHANGED 12.9mm DIM TO 12.7mm	7/20/15	LWD
(C)			
(D)			



### TOLERANCES

Profile thickness:  $\pm .015"$  (0.38mm)  
Profile width:  $\pm .020"$  (0.51mm)

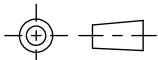
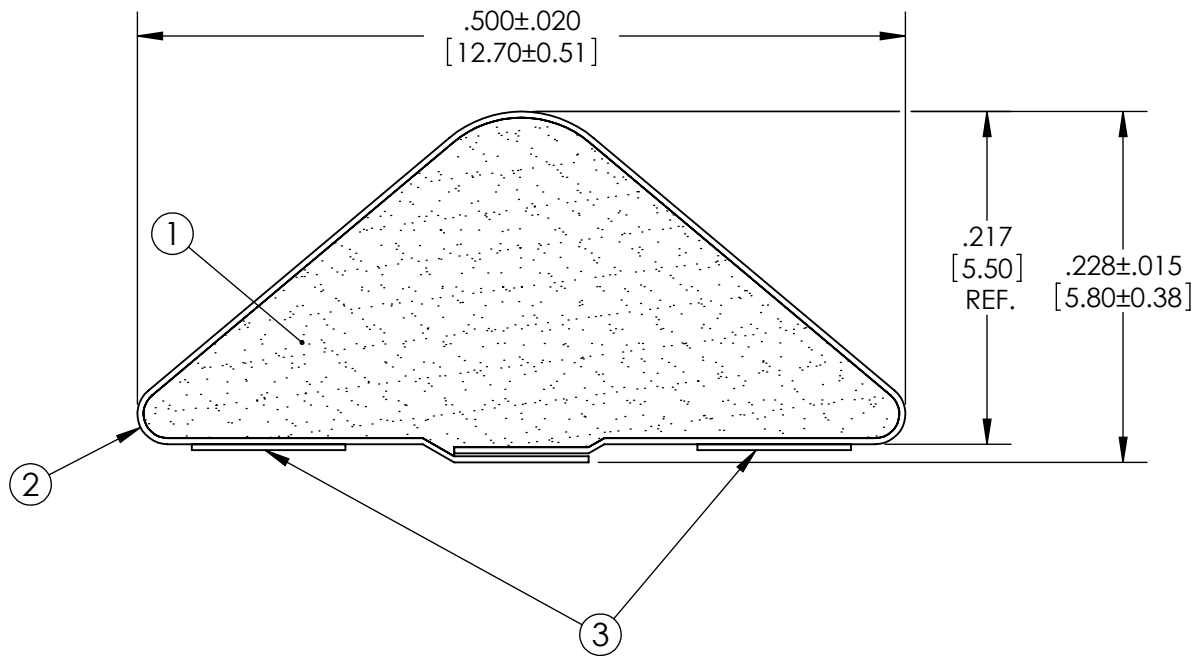
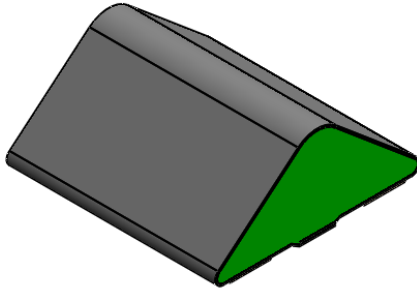


SCALE 1:1

PDR NO.:	(4)		
QUOTE NO.:	(3)		
CUSTOMER NAME:	(2)	SEE B.O.M.	CONDUCTIVE FABRIC
CUST DWG NO.:	(1)	SEE B.O.M.	URETHANE FOAM
SIZE A	Date 8/1/2009	Item No.	RM Number
SHEET 1 OF 2		Material Description	
SCALE: 8:1	Approved By	Drawn By FYP	Title 5.8mm x 12.7mm D-SHAPE EMI
Cad File No. DC48401A	Part No. EW3xxXxxxxx	Dwg. No. DC3E4840 REV B	Rev. B

## ROCHESTER DIVISION PRODUCT PRINT

The information disclosed in this drawing is confidential and the property of Schlegel Electronic Materials, INC. The use, disclosure, or reproduction of this information and related know-how is prohibited without written permission from Schlegel Electronic Materials, INC.



## TOLERANCES

Profile thickness:  $\pm 0.015$ " (0.38mm)

Profile width:  $\pm 0.020$ " (0.51mm)



SCALE 1:1

PDR NO.:	(4)		
QUOTE NO.:	(3)	SEE B.O.M.	PSA .100" WIDE (UNLESS OTHERWISE SPECIFIED)
CUSTOMER NAME:	(2)	SEE B.O.M.	CONDUCTIVE FABRIC
CUST DWG NO.:	(1)	SEE B.O.M.	URETHANE FOAM
SIZE	Date	8/1/2009	
A	SHEET 2 OF 2	Item No.	RM Number
SCALE: 8:1	Approved By	Drawn By FYP	Title 5.8mm x 12.7mm D-SHAPE EMI
Cad File No. DC48401A	Part No. EW3xx2Txxxx	Dwg. No. DC3E4840 REV B	Rev. B